

Есеп №1. черновик:

Al - 22,802

кстмисесіне - 24,64

? метал алюминийден 1,25есе көп.

Шешуі:

22,802 + 1,25 = 24,05 (Si)

Есеп №2.

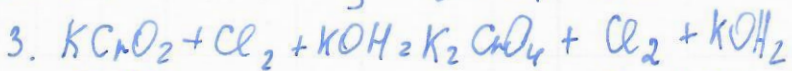
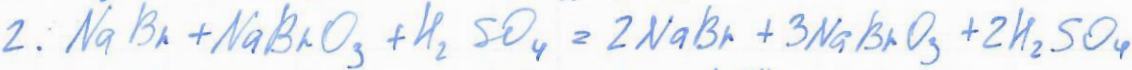
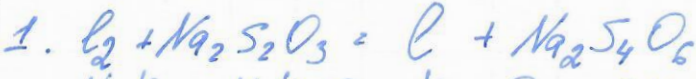
1. 17 + 86,62% = 86,79%

2. 86,79% + 6 = 86,85%

3. 2d₁d + d0 = 2d₂dd

4. 1916 + 1,25 = 204920100

Есеп №3



Есеп №4

$$\begin{array}{r} 8,231 \\ + 9,632 \\ \hline 0,923 \\ + 200 \\ \hline \end{array}$$

$$\begin{array}{r} 7,123 \\ 0,1071 \\ \hline 1,223 \end{array} \quad \begin{array}{r} 2138 \\ 1,25 \\ \hline 2013 \end{array}$$

$$\begin{array}{r} \times 1,25 \\ 2 \\ \hline 2,50 \end{array}$$

$$\begin{array}{r} + 22,2 \\ 11,25 \\ \hline 2345 \end{array}$$

$$\begin{array}{r} 100 \\ + 0,0032 \\ \hline 0,0132 \end{array}$$

$$\begin{array}{r} + 6518 \\ 5418 \\ + 1206 \\ 100 \\ \hline 130618 \\ + 222 \\ \hline 2138 \end{array}$$

Есеп №1.

Берілгені:

$$m(2S:Al) = 22,80г$$

$$қолдану - 24,64г$$

$$? - 1,25сәк көп$$

Шешуі:

$$24,64 - 22,64 = 2г/моль$$

$$2 \cdot 1,25 = 2,5г/моль$$

$$Жауабы: 2,5г/моль$$

Есеп №2

1. А қоспалыстау металды масса үлесі - 86,62%

$$17г + 86,62\% = 86,79\%$$

$$2. 86,79\% + 6 = 86,85\%$$

$$3. 1кг/л = 100г/мл$$

$$100г$$

$$0,0032г$$

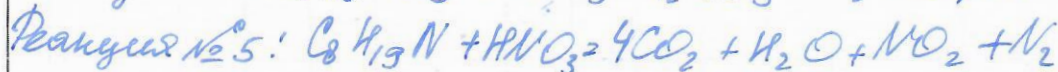
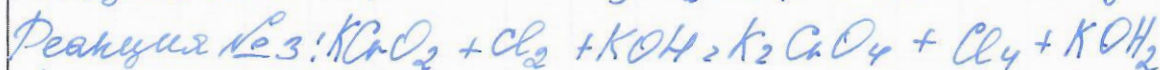
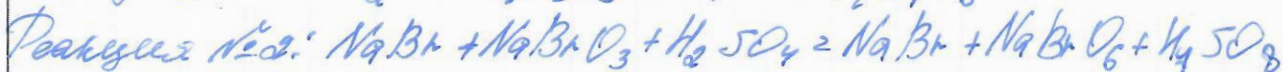
$$\left. \begin{array}{l} \\ \\ \end{array} \right\} \text{Шешуі: } 100г + 100г/мл + 0,0032г = \\ = (100г + 0,0032г) + 100г/мл = 0,0132г + 100г/мл \\ = 0,0232г/мл$$

$$4. 1916 + 22,2 = 2138$$

$$2138 - 1,25 = 2013г$$

$$\text{Жауабы: } 2138 \text{ немесе } 2013 \text{ гөл мөл}$$

Есеп №3



Есеп № 4

Mg - 100г

ерімділік 80°C

65,8г

54,8г

20°C

$$(65,8 + 54,8) + 100 = 1306$$

$$80^\circ\text{C} + 20^\circ\text{C} = 100^\circ\text{C}$$

$$1306 + 100^\circ\text{C} = 1406$$

2. 300°C

0,2312

50мл

0,1M

100мл

50мл

0,6322

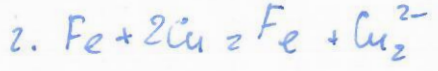
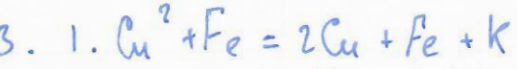
$$0,2312 + 0,6322 = 0,5232$$

$$50\text{мл} + 100\text{мл} + 50\text{мл} = 200\text{мл}$$

$$0,5232 + 200 = 1,123$$

$$1,123 + 0,1M = 1,1232 \text{ моль}$$

$$1,1232 + 300^\circ\text{C} = 1,523^\circ\text{C} \text{ моль}$$



1. Берілгені: $m = 22,80$
 $S = 2H, 8Cu$
 Шешуі: $22,80 O_2 (H) \cdot 24,6 / 114 = 53,442 (H)$
 Жауабы: $53,442 (H)$

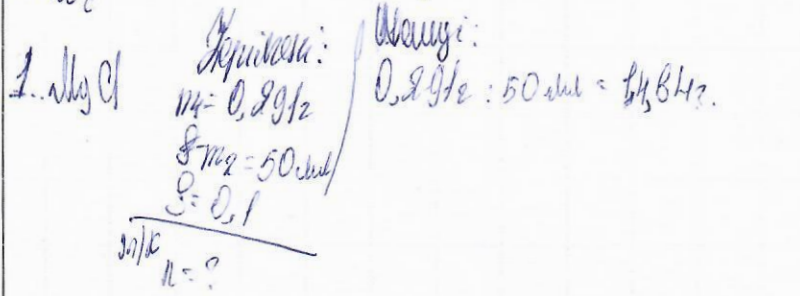
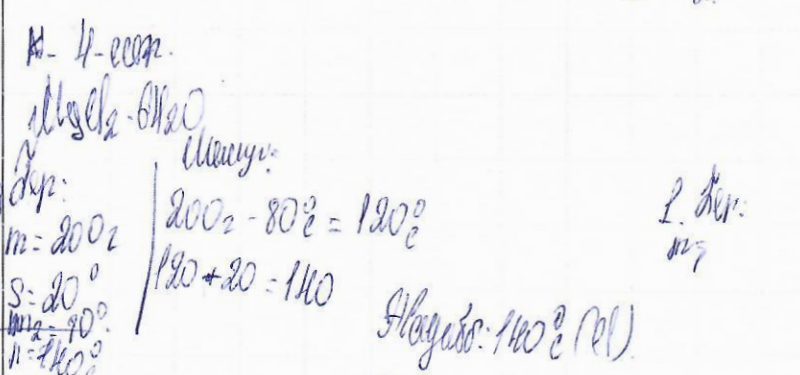
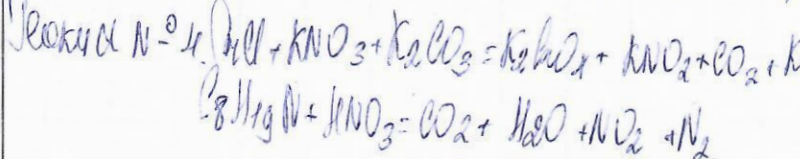
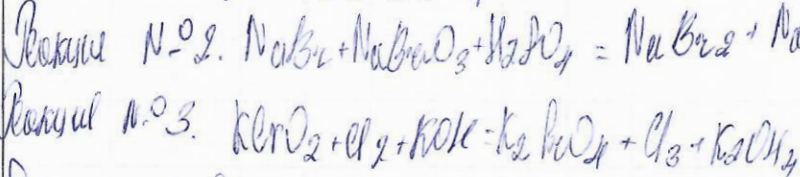
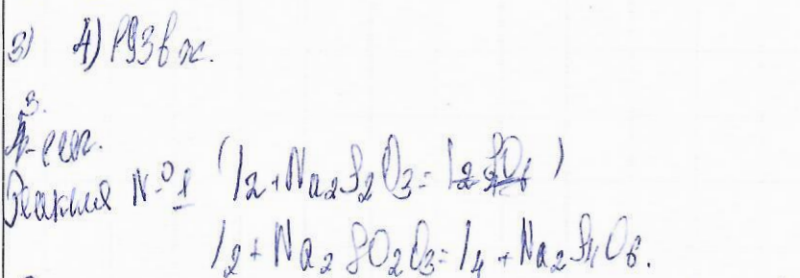
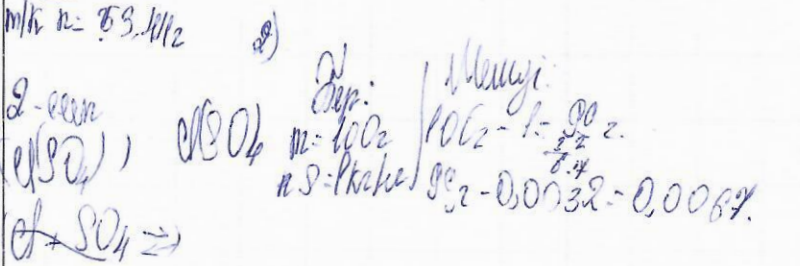
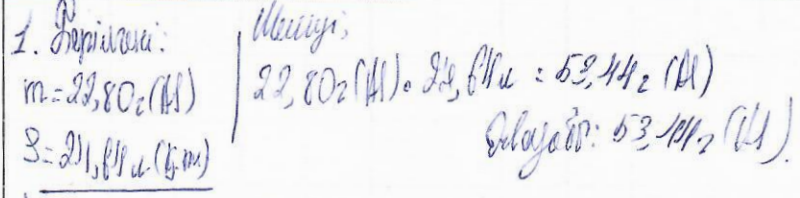
2. Берілгені: $m = 6002$
 $S = Pk, 1d$
 Шешуі: $6002 - 1 = 992$
 $992 - 0,0032 = 0,0067$
 1) 1936%

3-есеп.
 Реакция $N-01$ $I_2 + Na_2SO_3 = I_4 + Na_2S_4O_8$
 Реакция $N-02$ $NaBr + NaBrO_3 + H_2SO_4 = NaBr_2 + NaBrO_4 + H_2SO_4$
 Реакция $N-03$ $KClO + Cl_2 + KOH = KClO_4 + Cl_2 + KOH$
 Реакция $N-04$ $Cu + KNO_3 + KOH = Cu_2O + KNO_2 + CO_2 + K$
 $C_2H_5N + HNO_3 = CO_2 + H_2O + NO_2 + N_2$

4-есеп.
 Берілгені: $m = 2002$
 $S = 20$
 $m_2 = 10$
 Шешуі: $2002 - 20 = 1980$
 $1980 + 20 = 2000$
 Шешуі: $1 \cdot 1002 - 20 \cdot 20 = 40$
 $65\% \cdot 10 - 64,82 = 32,30m$

1. Берілгені: $m_1 = 0,2912$
 $m_2 = 50mm$
 $S = 0,1$
 Шешуі: $0,2912 : 50mm = 14,6\%$
 Жауабы: $14,6\%$

2. Берілгені: $m = 50mm$
 $S = 12,0$
 Шешуі: $50 \cdot 12,0 - 0,05 = 0,55$
 Жауабы: $0,55$



50
+ 20
70

185
54
- 3748
54
- 54
0